

College Student English Proficiency Test (CSEPT): The 2014 Test Report

The College Student English Proficiency Test (CSEPT), developed and administered by the LTTC, consists of two levels of assessment. Level 1 is intended for students whose English proficiency is GEPT Elementary Level to GEPT Intermediate Level (CEFR A2 to B1). Level 2 is intended for students whose English proficiency is GEPT Intermediate Level to GEPT High-Intermediate Level (CEFR B1 to B2). It has been used as a tool for evaluating the effectiveness of English teaching, assessing students learning and progress, placing students in appropriate courses, and serving as a graduation requirement. A number of colleges and universities, such as National Kaohsiung Normal University, Wenzao Ursuline College of Languages, Chihlee Institute of Science of Technology, and Southern Taiwan University, recognize and use the test for one or more of the above-mentioned purposes.

In 2014, 99% of Level 1 test takers were four-year college or university students in various disciplines (see Figure 1), and their average age was 20.1. The male-female ratio of

the test takers was approximately 1:1 (see Table 3). Level 1 test takers scored an average of 66.76 and 67.42 on the Listening and General Test (an integrated test of vocabulary, usage, and reading comprehension), respectively (see Table 1). In terms of proficiency level, 25% of Level 1 test takers attained GEPT Intermediate Level (CEFR B1), and 26% attained GEPT Elementary Level (CEFR A2).

With regard to Level 2 test takers, 84% of them were university or five-year college students, and most of them were foreign language majors (see Figure 3). Their average age was 19.8. The male-female ratio of the test takers was approximately 1:3 (see Table 3). Level 2 test takers scored an average of 71.62, 71.09, and 67.11 on the Listening, Usage, and Reading tests, respectively (see Table 1). In terms of proficiency level, 33% of Level 2 test takers attained GEPT High-Intermediate Level (CEFR B2), 36% GEPT Intermediate Level (CEFR B1), and 24% GEPT Elementary Level (CEFR A2).

Figure 1 Test Taker Distribution by Education
Level: Level 1

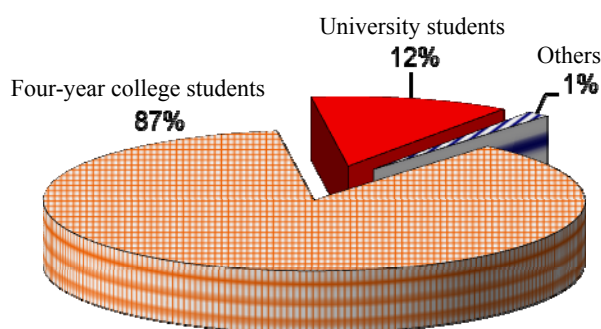


Figure 3 Test Taker Distribution by Education
Level: Level 2

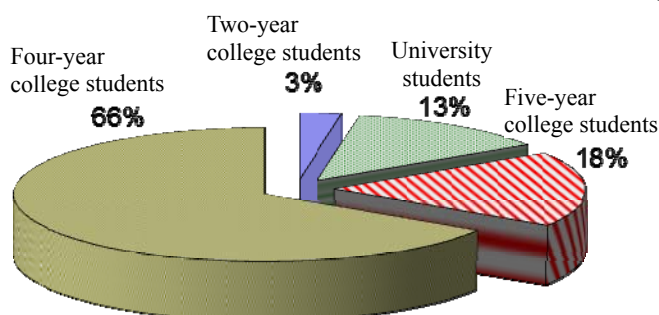


Figure 2 Score Distribution: Level 1

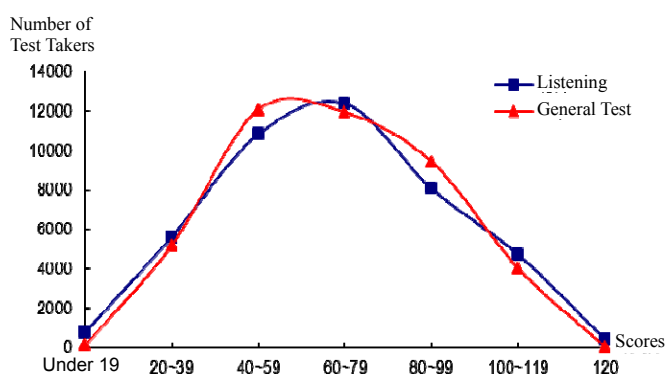
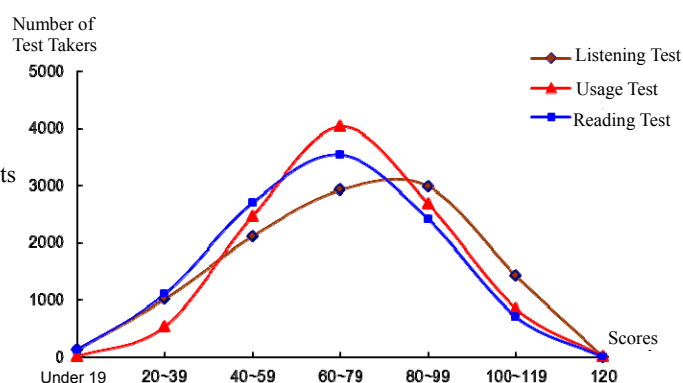


Figure 4 Score Distribution : Level 2



CSEPT Level 1

Table 1 Descriptive Test Score Statistics

	Listening test	General test	Total score
No. of items	25	60	
Mean	66.76	67.42	134.18
SD	25.42	22.76	45.61
Maximum score	120	120	240

Table 2 Average Sub-scores and Total Scores (by Education Level)

Education Level	% of test takers	Listening test	General test	Total score
University	12%	81.25	84.26	165.50
Four-year college	87%	64.72	65.07	129.78
Others	1%	68.56	68.59	137.15

Table 3 Average Sub-scores and Total Scores (by Gender)

Gender	% of test takers	Listening test	General test	Total score
Male	51%	64.33	64.32	128.65
Female	49%	69.31	70.69	140.00

Table 4 Score Distribution (Subtest)

Score range	Listening test		General test	
	% of test takers	PR	Score range	% of test takers
120	1%	99	0%	99
110~119	4%	94	3%	96
100~109	7%	88	6%	89
90~99	9%	76	11%	78
80~89	10%	65	12%	66
70~79	15%	53	13%	53
60~69	14%	40	14%	38
50~59	13%	27	15%	23
40~49	12%	14	14%	10
30~39	9%	5	9%	2
20~29	4%	1	3%	0
Below 19	2%	0	0%	0

Table 5 Score Distribution (Total Score)

Score range	% of test takers	PR	CEFR/GEPT levels
240	0%	99	GEPT Intermediate (CEFR B1)
230~239	1%	98	
220~229	2%	96	
210~219	3%	94	
200~209	4%	90	
190~199	5%	85	
180~189	5%	80	
170~179	6%	74	GEPT Elementary (CEFR A2)
160~169	6%	68	
150~159	6%	62	
140~149	7%	55	
130~139	7%	47	
120~129	8%	40	Below GEPT Elementary (CEFR A1)
110~119	8%	32	
100~109	7%	25	
90~99	7%	18	
80~89	6%	11	
70~79	5%	6	
60~69	4%	2	
Below 59	3%	0	

CSEPT Level 2

Table 1 Descriptive Test Score Statistics

	Listening test	Usage test	Reading test	Total score
No. of items	30	50	30	
Mean	71.62	71.09	67.11	209.83
SD	23.82	19.64	21.82	59.31
Maximum score	117	120	118	350

Table 2 Average Sub-scores and Total Scores (by Education Level)

Education Level	% of test takers	Listening test	Usage test	Reading test	Total score
University	13%	58.02	65.19	60.82	184.03
Four-year college	66%	72.02	71.16	66.96	210.14
Two-year college	3%	84.17	80.59	77.09	241.85
Five-year college	18%	78.32	73.88	70.85	223.05
Others	0%	57.67	51.83	52.33	161.83

Table 3 Average Sub-scores and Total Scores (by Gender)

Gender	% of test takers	Listening test	Usage test	Reading test	Total score
Male	25%	66.33	67.55	63.68	197.56
Female	75%	73.37	72.26	68.24	213.87

Table 4 Score Distribution (Subtest)

Score range	Listening test		Usage test		Reading test	
	% of test takers	PR	% of test takers	PR	% of test takers	PR
120	0%	99	0%	99	0%	99
110~119	3%	96	2%	97	2%	97
100~109	10%	85	6%	91	4%	93
90~99	12%	73	11%	78	12%	81
80~89	16%	56	14%	63	11%	70
70~79	14%	42	21%	45	20%	51
60~69	14%	29	17%	26	14%	37
50~59	10%	18	14%	13	16%	20
40~49	10%	9	10%	5	9%	11
30~39	6%	4	4%	1	8%	4
20~29	4%	1	1%	0	3%	1
Below 19	1%	0	0%	0	1%	0

Table 5 Score Distribution (Total Score)

Score range	% of test takers	PR	CEFR/GEPT levels
Above 320	2%	97	GEPT High-Intermediate (CEFR B2)
310~319	2%	95	
300~309	3%	93	
290~299	3%	90	
280~289	4%	86	
270~279	4%	82	
260~269	5%	77	
250~259	5%	72	
240~249	6%	66	GEPT Intermediate (CEFR B1)
230~239	6%	60	
220~229	7%	54	
210~219	6%	48	
200~209	7%	42	
190~199	6%	36	
180~189	6%	30	GEPT Elementary (CEFR A2)
170~179	5%	25	
160~169	5%	20	
150~159	4%	16	
140~149	4%	12	
130~139	3%	9	
120~129	3%	7	Below GEPT Elementary (CEFR A1)
110~119	2%	4	
100~109	2%	3	
90~99	1%	1	
80~89	1%	0	
70~79	1%	0	
Below 69	0%	0	