

試題本文

Kevin likes arts and crafts. Today, he wants to try something new. He finds an old guide to follow.

Bob with the Magic Wand

Step 1 Cut out all the pieces along the black lines only.



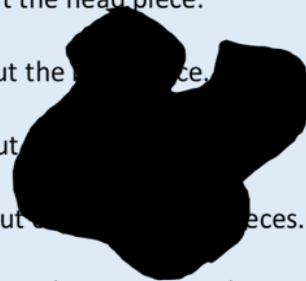
1a First, cut out the head piece.

1b Next, cut out the body piece.

1c Then, cut out the arms.

1d And then, cut out the legs pieces.

1e Finally, cut out the magic wand piece.



Step 2 Fold the pieces along the dotted lines.

Step 3 Draw or color all the pieces.

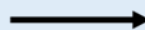
Step 4 Glue all the tabs to the edge of each piece.

Step 5 Glue all the Bob pieces together.

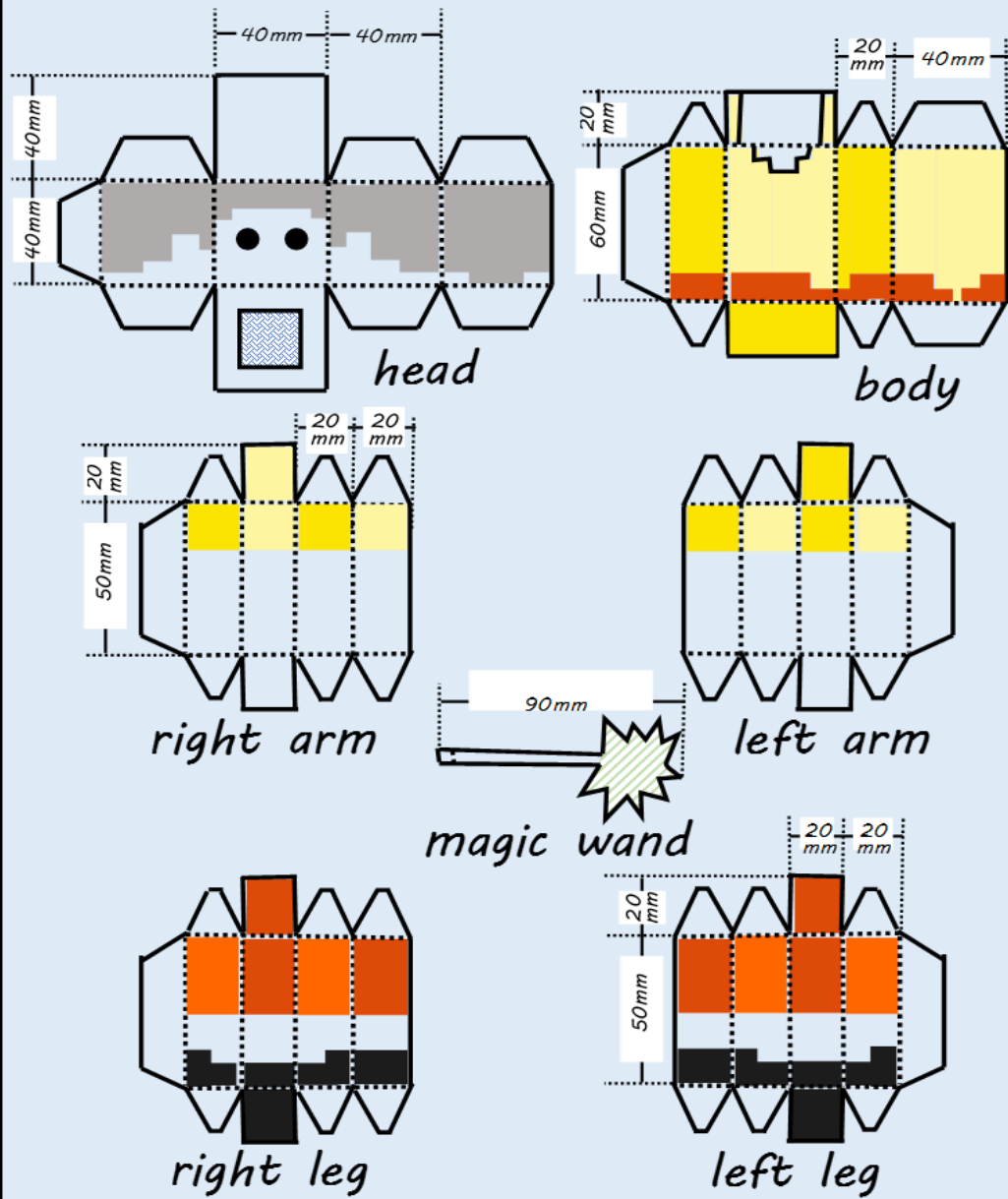
Step 6 Glue the magic wand to one of Bob's hands.



MORE INFORMATION



Bob with the Magic Wand



**For a bigger model,
use bigger paper*

P. 2

參考資料：

<https://education.minecraft.net/>

<https://www.pixelpapercraft.com/>

<https://www.youtube.com/watch?v=R7IKaN-G7Mg>

<https://differentiationcentral.com/>

https://www.tn.gov/content/dam/tn/education/training/access_differentiation_handbook_k-2.pdf

Q1

What does Kevin want to do?

- (A) He wants to write a card.
- (B) He wants to write a guide.
- (C) He wants to make a model.
- (D) He wants to make a magic wand.

正解 : C

Q2

You will hear the information . Which one is correct for Step 1?

音檔內容 :

Hi, Kiddo! I'd like to show you how to make a Bob with the Magic Wand model.

There are only six steps.

Step one, cut out all the pieces along the black lines only.

One "A" First, cut out the head piece.

One "B" Next, cut out the body piece.

One "C" Then, cut out the two arm pieces.

One "D" And then, cut out the two leg pieces.

One "E" Finally, cut out the magic wand piece.

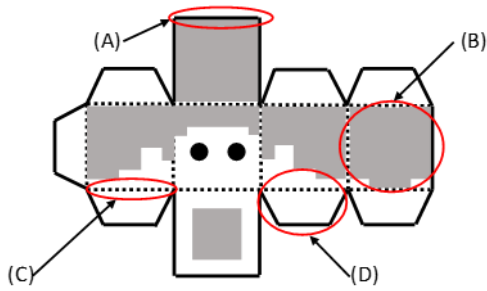
OK, we have cut out all the pieces. Now, are you ready for the next step?

- (A) 1b Next, cut out the two arm pieces.
1c Then, cut out the two leg pieces.
1d And then, cut out the body piece.
- (B) 1b Next, cut out the body piece.
1c Then, cut out the two arm pieces.
1d And then, cut out the two leg pieces.
- (B) 1b Next, cut out the two leg pieces.
1c Then, cut out the body piece.
1d And then, cut out the two arm pieces.
- (C) 1b Next, cut out the body piece.
1c Then, cut out the two leg pieces.
1d And then, cut out the two arm pieces.

正解 : B

Q3

What is a tab?



正解 : D

Q4

Look at the table of paper sizes. What size paper could Kevin buy? Why?

Table of Paper Sizes			
A SERIES		B SERIES	
size	mm	size	mm
A1	five hundred and ninety-four ✗ eight hundred and forty-one	B1	seven hundred and seven ✗ one thousand
A2	four hundred and twenty ✗ five hundred and ninety-four	B2	five hundred ✗ seven hundred and seven
A3	two hundred and ninety-seven ✗ four hundred and twenty	B3	three hundred and fifty-three ✗ five hundred
A4	two hundred and ten ✗ two hundred and ninety-seven	B4	two hundred and fifty ✗ three hundred and fifty-three
A5	one hundred and forty-eight ✗ two hundred and ten	B5	one hundred and seventy-six ✗ two hundred and fifty

Kevin could buy _____ (size) paper.


Because _____

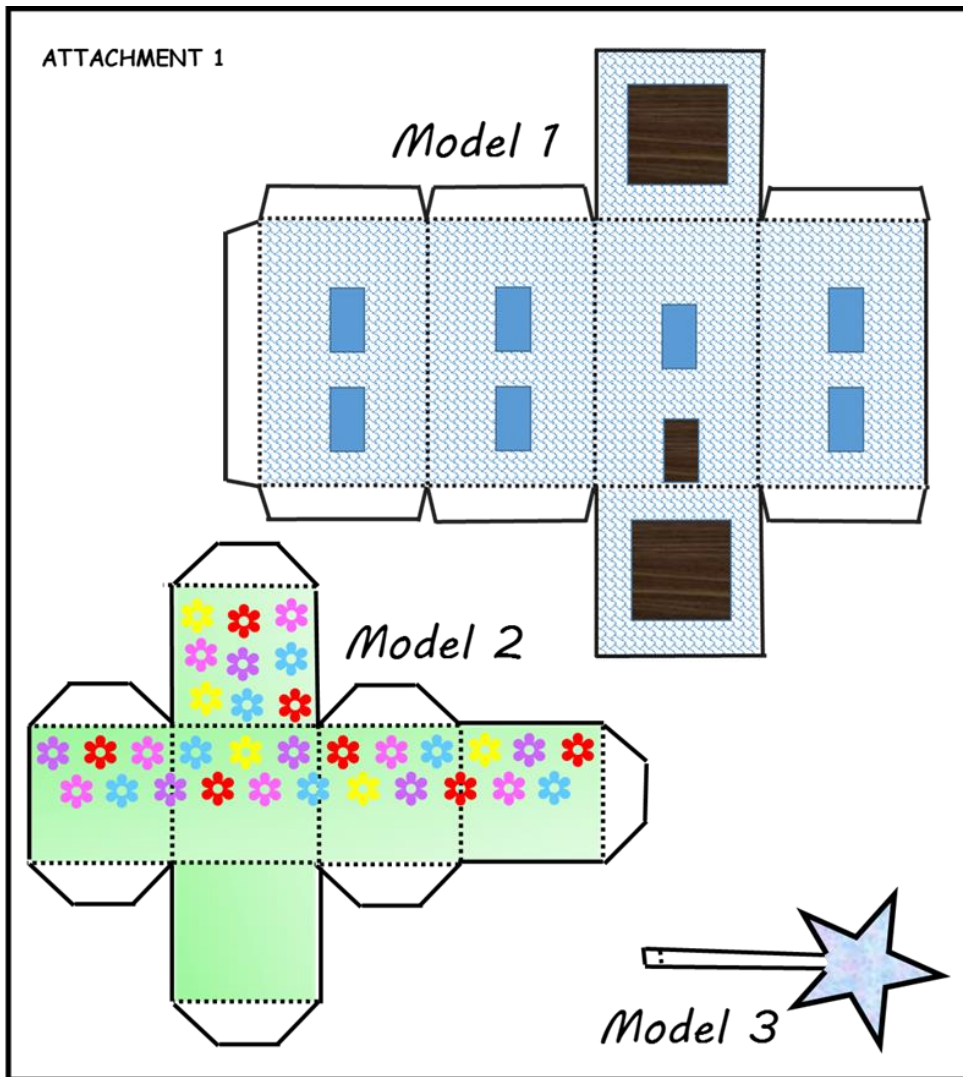
參考答案 :

Kevin could buy A1、A2、B1、B2 or B3 (size) paper.Because It can make a model. / It's big enough to make a model.

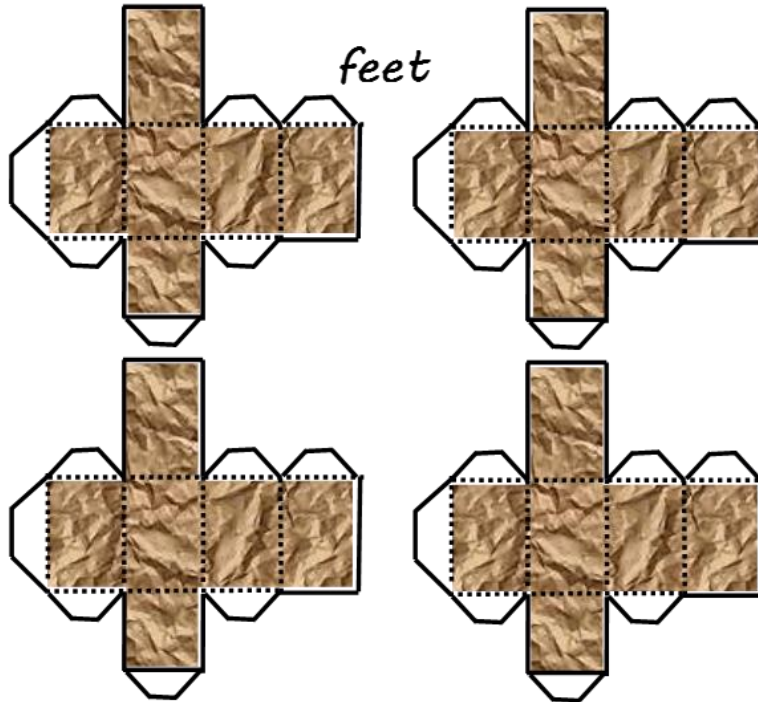
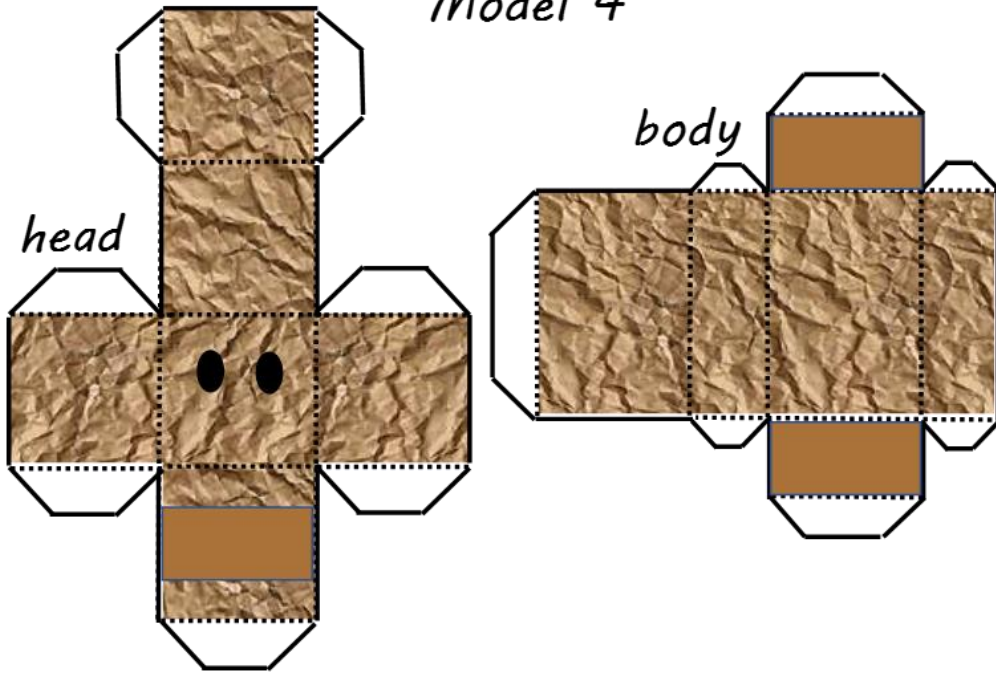
Q5

It's your turn to write your own guide.

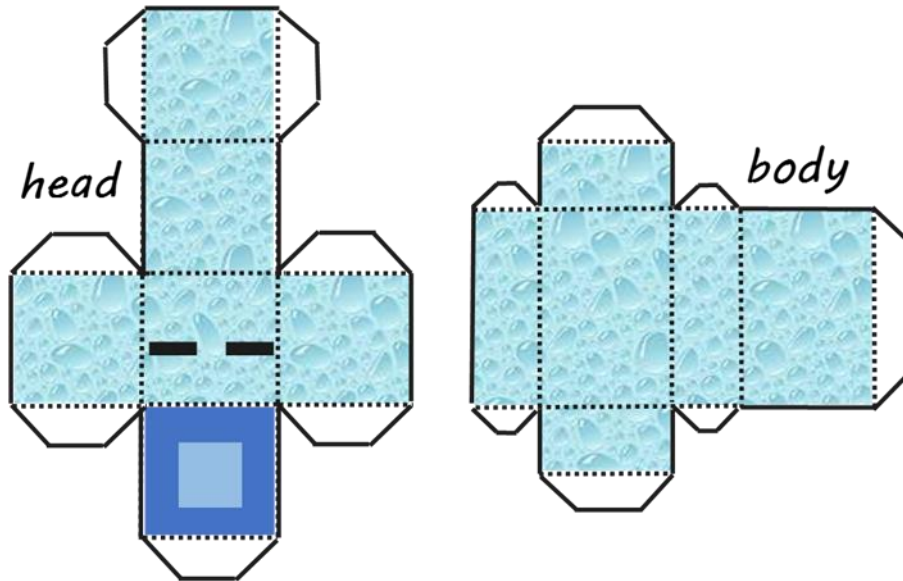
1. You will have 2~3 models. You can choose 2~3 models from 6 models attached. (ATTACHMENT 1~4)
2. Put them together as a whole.
3. Give the new model a name.
4. Write a guide. (ATTACHMENT 5)
5. Record the information in a step by step guide .



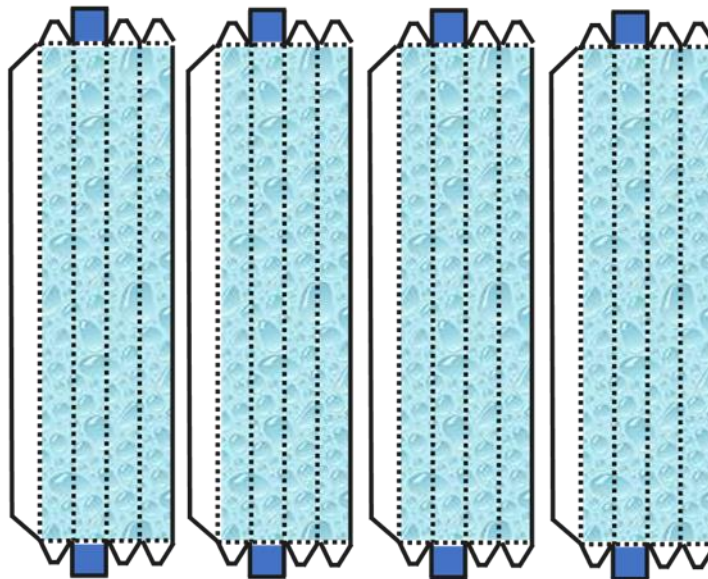
Model 4



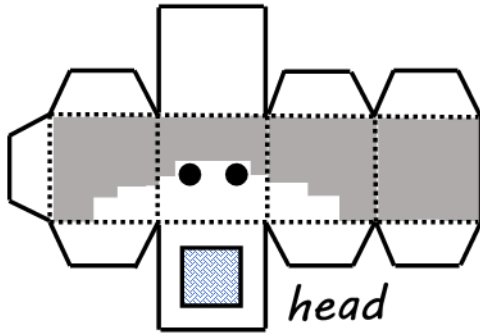
Model 5



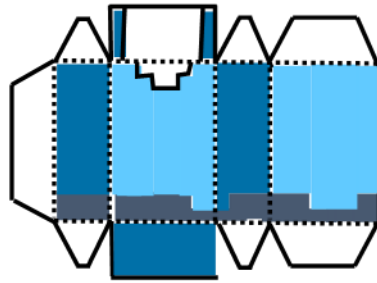
arm(s) or leg(s)



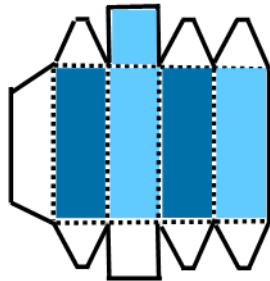
Model 6



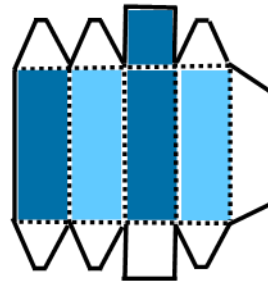
head



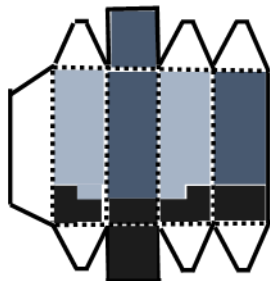
body



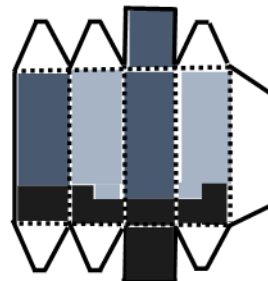
right arm



left arm



right leg



left leg

